

Model	Applicable To	File Under	Bulletin No.
1997 PRELUDE	ALL with A/T Thru VIN JHMBB6 . . . VC012298	TRANS	97-029
			Issue Date MAY 1997

MIL Stays On After Starting / DTCs P1768 and P1773

SYMPTOM

The Malfunction Indicator Lamp (MIL) stays on after starting the engine, and the PGM Tester (with version 7.22 or later) displays DTCs P1768 and P1773 in the Honda Systems A/T menu, or the MIL flashes DTCs 16 and 23 if you use the SCS service connector.

- If both DTCs are indicated, go to **REPAIR PROCEDURE**. If only one code is present, disregard this bulletin, and follow the troubleshooting procedures in the Transmission section of the service manual.
- If the MIL is on, and the PGM Tester displays "No A/T DTCs," go to **DIAGNOSIS** to confirm the symptom.

NOTE: When the malfunction initially occurs, the MIL stays on and the D4 light flashes. During the next driving cycle, the D4 light will not flash unless the malfunction occurs again.

PROBABLE CAUSE

Electrical spikes from the ignition switch affect the Transmission Control Module (TCM).

CORRECTIVE ACTION

Replace the TCM.

PARTS INFORMATION

Transmission Control Module (TCM):
P/N 28100-P5M-A01

WARRANTY CLAIM INFORMATION

In warranty: The normal warranty applies.

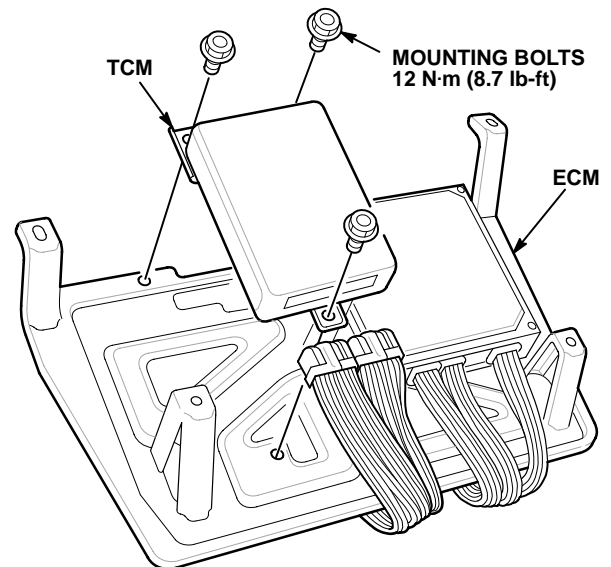
DIAGNOSIS

1. While using the PGM Tester, select Generic OBD II mode to retrieve the DTCs.

2. If both DTC P1768 and P1773 are present, go to **REPAIR PROCEDURE**. If only one code is present, disregard this bulletin, and follow the diagnostic procedures in section 14 of the service manual.

REPAIR PROCEDURE

1. Remove the passenger's side door sill molding.
2. Pull the passenger's side carpet back to expose the ECM cover.
3. Remove the ECM cover mounting nuts, then turn the ECM cover over.
4. Remove the TCM by disconnecting the two connectors and removing the three mounting bolts.



5. Install the new TCM in the reverse order of removal, and reinstall all removed parts.
6. Record the customer's radio station presets, and the radio anti-theft code.
7. Pull the BACK-UP (10 A) fuse from the under-hood fuse box for 10 seconds to reset the ECM and the TCM.
8. Enter the radio anti-theft code and the customer's radio station presets. Reset the clock.