



2001 Stream Owner's Manual Revision Notice

BACKGROUND

The 2001 Stream Owner's Manual has errors on pages 108 and 206.

Page 108, Keys and Locks, Tailgate

The text and supporting illustration instruct the owner to use the key to lock or unlock the tailgate lock. **There is no key cylinder on the outside of the tailgate.** To lock or unlock the tailgate lock, you need to:

- Lock or unlock the driver's door with the lock tab on the door, or
- Lock or unlock either front door from the outside using the key, or
- Lock or unlock the doors with the remote transmitter if the vehicle has a keyless entry system

Page 206, Break-in Period, Petrol

The Petrol table has some incorrect information. All recommended Petrol types for the K20A1 engine should be PREMIUM UNLEADED or UNLEADED as appropriate. Also, notes 4 and 5 below the table should be interchanged.

Because of the changes to these two pages, the publication number and part number in the lower left corner of the back cover also need to be changed. The original publication and part number, 32S7A600, 00X32-S7A-6000, is replaced by 32S7A601, 00X32-S7A-6011.

CUSTOMER NOTIFICATION

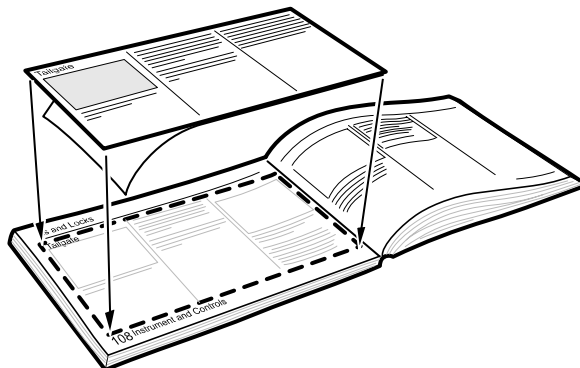
Stream owners affected by this revision must be sent a letter of explanation and one revision label kit. The kit consists of three adhesive-backed labels to change pages 108, 206, and the back cover of the owner's manual. The large label is for page 108, the smaller label is for page 206, and the smallest label is for the back cover.

Five extra revision label kits are included with this service bulletin. Some of your customers may accidentally misplace or destroy the labels and may need additional labels.

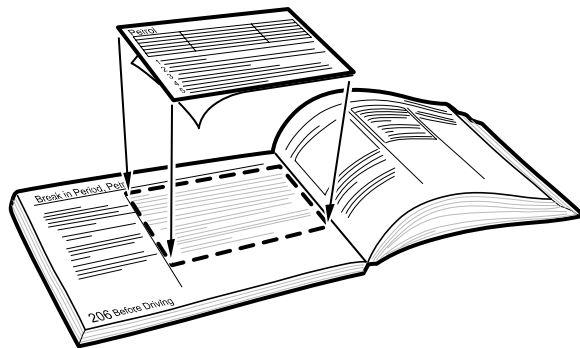
LABEL APPLICATION INSTRUCTIONS

Use the revision label kits to change the owner's manuals for all 2001 Streams in your dealer inventory. To apply each label, peel the backing off half of the label, and carefully press the label into place. Then peel off the rest of the backing, and smooth the label to remove any wrinkles.

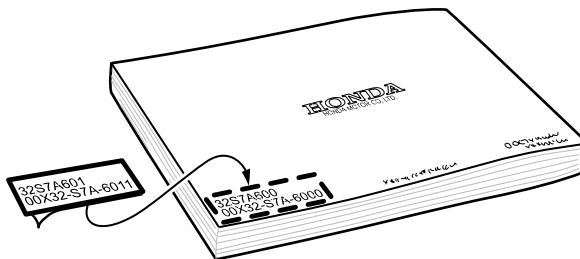
Apply the large label to page 108:



Apply the smaller label to page 206:



Apply the smallest label to the back cover:



EXAMPLE OF CUSTOMER LETTER

August 2001

Dear Stream Owner:

Your 2001 Stream Owner's Manual has two errors that need to be corrected.

Page 108 of your manual says to use the key to lock and unlock the tailgate lock. **Your vehicle does not have a key cylinder on the outside of the tailgate.**

To lock or unlock the tailgate lock, you need to:

- Lock or unlock the driver's door with the lock tab on the door, or
- Lock or unlock either front door from the outside with the key, or
- Lock or unlock the doors with the remote transmitter if your vehicle has a keyless entry system

The Petrol table on page 206 has some incorrect information. If your vehicle has a K20A1 engine, the recommended petrol type should be PREMIUM UNLEADED or UNLEADED as appropriate. Also, notes 4 and 5 below the table should be interchanged.

Please use the enclosed labels to change pages 108, 206, and the back cover of your manual. The large label is for page 108, the smaller label is for page 206, and the smallest label is for the back cover.

To apply each label, peel the backing off half of the label, and carefully press the label into place. Then peel off the rest of the backing, and smooth the label to remove any wrinkles.

Honda distributors/dealers have been sent a notice advising them of these changes. If you need additional revision labels, or if you have any questions, please contact your local Honda distributor/dealer.

Thank you for your cooperation. We apologize for any inconvenience this may cause you.

Sincerely,

(Enter Distributor name)