

Rough Feel When Pressing the Accelerator Pedal

BACKGROUND

The accelerator pedal feels rough or notchy when you press it.

CORRECTIVE ACTION

Determine the lot number/production date of the throttle cable and, if necessary, replace the cable.

PARTS INFORMATION

Refer to your Parts manual for the part number of the throttle cable for the car you are repairing.

WARRANTY CLAIM INFORMATION

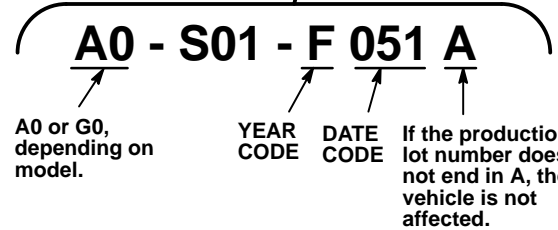
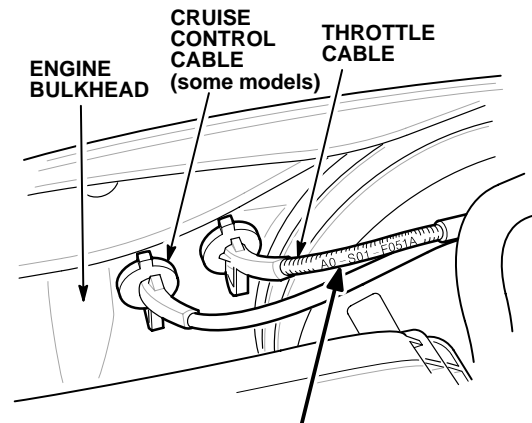
Description	FRT
Inspect throttle cable	0.2
Replace throttle cable	0.4

Failed part: P/N 17910-S01-A01

Defect code: 030

INSPECTION PROCEDURE

1. Locate and write down the throttle cable production lot number stamped on the cable.



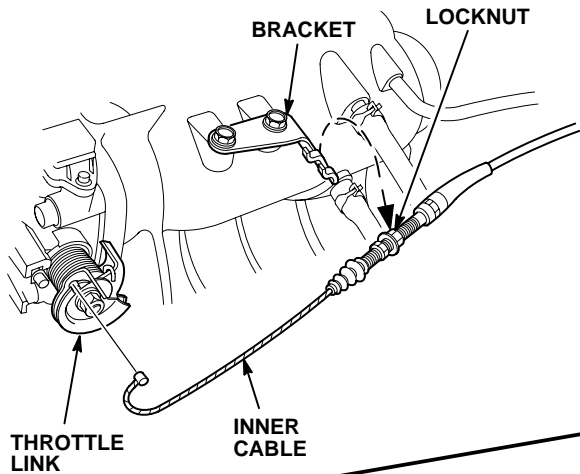
2. Does the lot number end in **A**?
YES - Continue to step 3.
NO - This vehicle is not affected. Return the vehicle to the customer.
3. The sixth character (A0-S01-ExxxA) is the production year code, E for 1995 and F for 1996.
 - If the cable was produced in 1995 (E), go to REPAIR PROCEDURE.
 - If the cable was produced in 1996 (F), continue to step 4.
4. The three digits following the year are the date code for the date of production, 001 through 365.
 - If the date code is from 001 through 162, go to REPAIR PROCEDURE.
 - If the date code is 163 or greater, continue to step 5.

5. Check the operation of the accelerator pedal.
 - If the accelerator pedal does not move smoothly, go to REPAIR PROCEDURE.
 - If the accelerator pedal moves smoothly, return the vehicle to the customer.

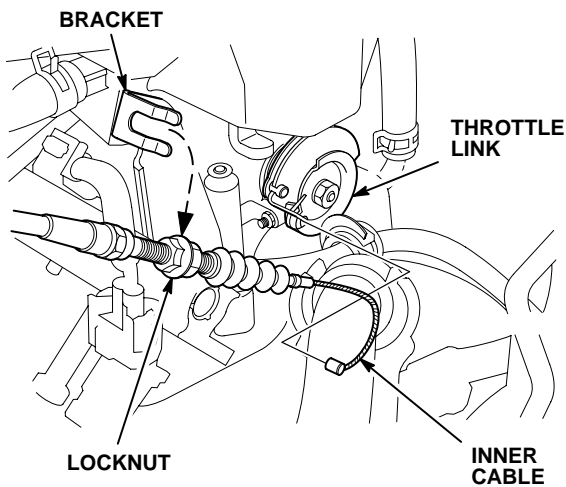
REPAIR PROCEDURE

1. Loosen the throttle cable locknut, and remove the cable from the bracket. Detach the inner cable from the throttle link.

D16Y5, D16Y8 engine:

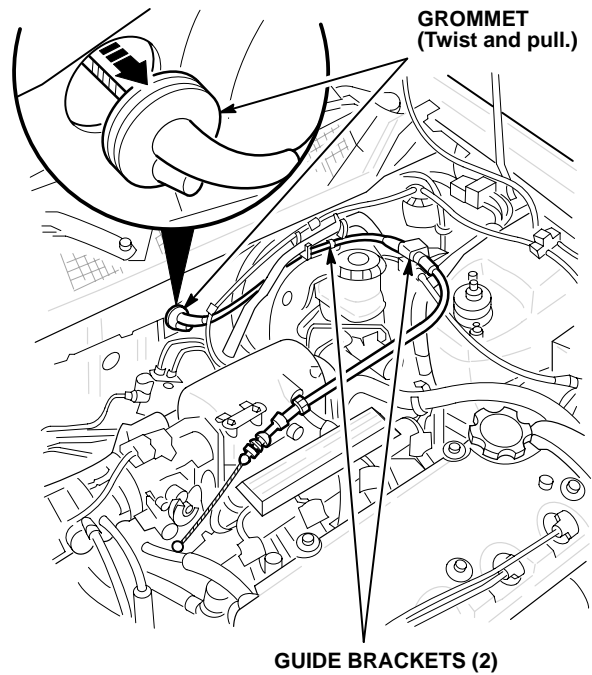


D16Y7 engine:

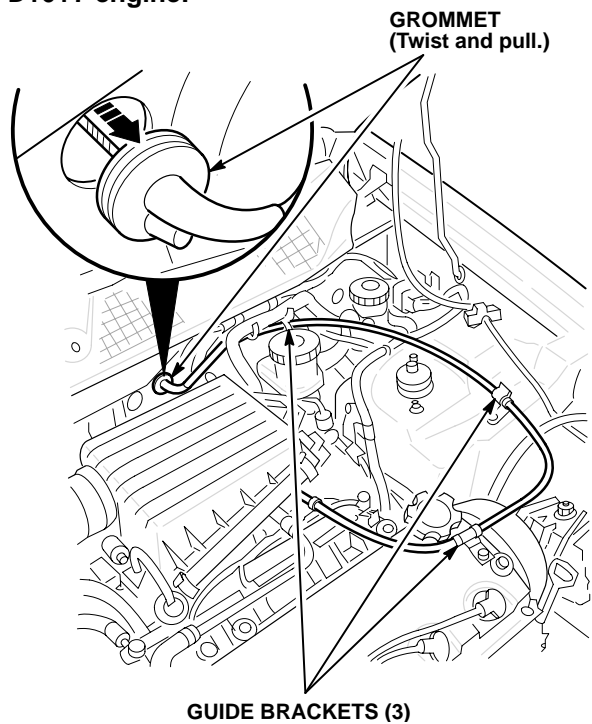


2. Remove the cable from the guide brackets, then twist and pull the throttle cable grommet out of the bulkhead.

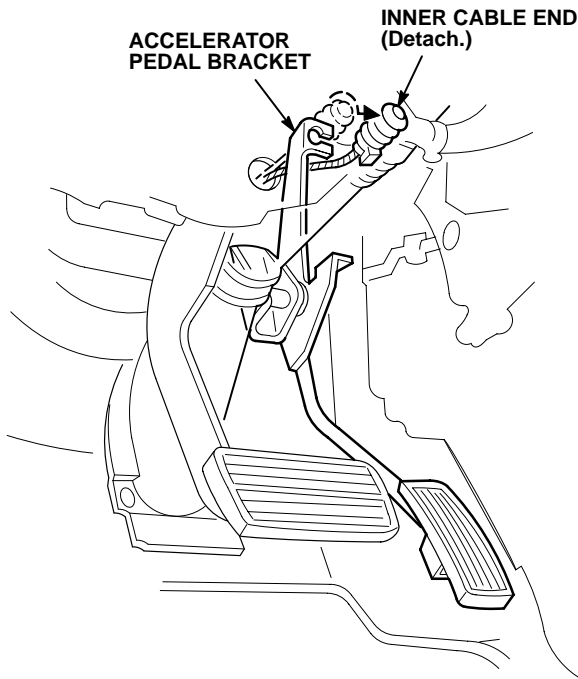
D16Y5, D16Y8 engine:



D16Y7 engine:



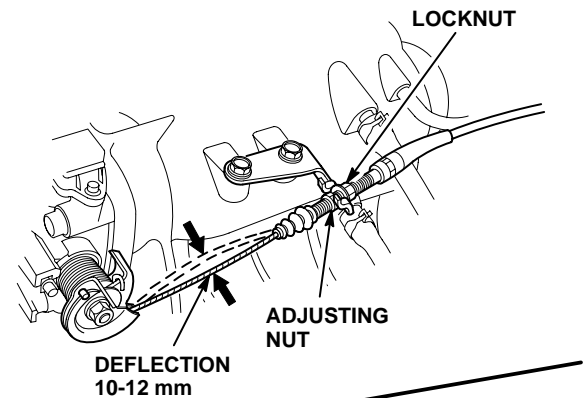
3. Under the dash, detach the inner cable end from the accelerator pedal bracket. Discard the old throttle cable.



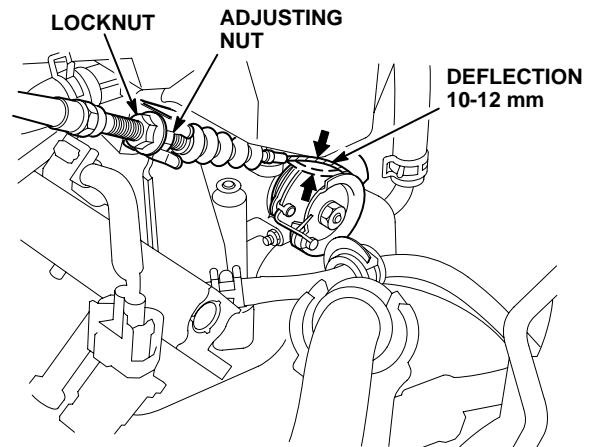
4. From the engine compartment, feed a new throttle cable (see PARTS INFORMATION) through the bulkhead, then push and twist the grommet into place. Install the cable in its guide brackets.
5. Attach the inner cable end to the accelerator pedal.
6. Open the throttle valve fully, then attach the inner cable to the throttle link, and install the cable in the bracket without tightening the locknut.

7. Turn the adjusting nut until you have 10 to 12 mm of cable deflection, then tighten the locknut.

D16Y5, D16Y8 engine:



D16Y7 engine:



8. Check the accelerator pedal; it should feel smooth when you operate it, and it should open the throttle valve fully when you press it to the floor.