

Model	Applicable To	File Under	Bulletin No.
1996 – 97 CIVIC	ALL	BODY	97-053
			Issue Date SEP 1997

Wind Noise From the B-Pillar

SYMPTOM

Wind noise from either B-pillar at speeds above 64 km/h.

PROBABLE CAUSE

A gap between the front or rear glass run channel and the door frame.

CORRECTIVE ACTION

- Install EPT foam on the glass run channel (front and rear doors).
- Adjust the window regulator, the glass, and the front channel (front door).
- Adjust the center and rear channels (rear door).

WARRANTY CLAIM INFORMATION

In warranty: The normal warranty applies.

REQUIRED MATERIALS

3M General Purpose Cleaner:
3M P/N 051135-08984 (or equivalent)

EPT Sealer 5T:
P/N 06991-SA5-000

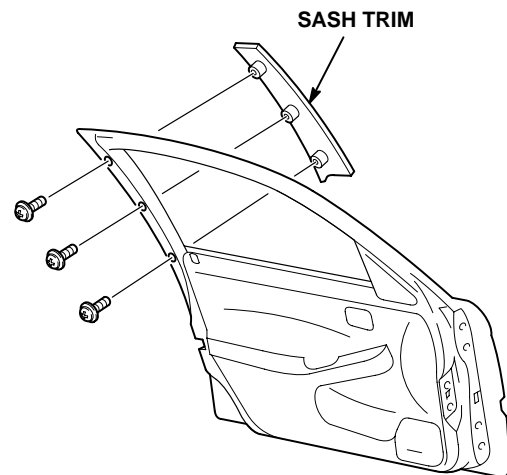
REPAIR PROCEDURE

Test-drive the vehicle to locate the wind noise.

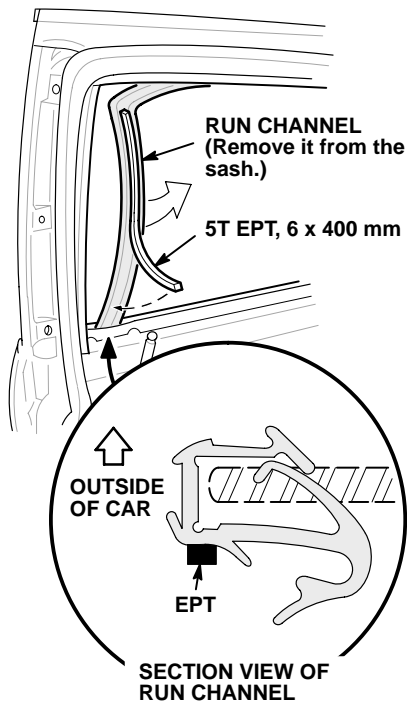
- If the noise comes from a front door, go to **Repairing the Front Door**.
- If the noise comes from a rear door, go to **Repairing the Rear Door** on page 3.

Repairing the Front Door

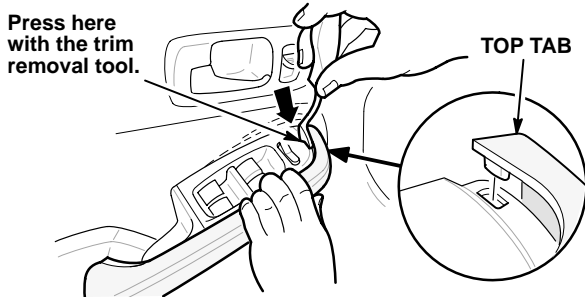
1. Lower the glass all the way.
2. Remove the sash trim.



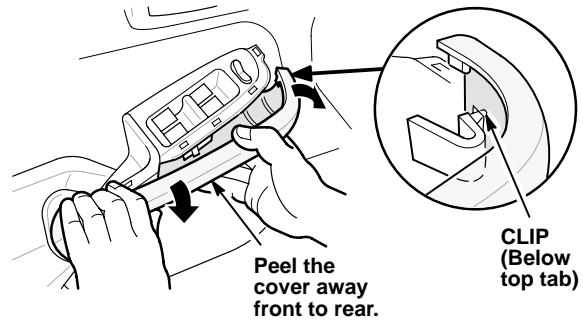
3. Pull the rear edge of the glass run channel out of the sash, then clean the run channel with 3M General Purpose Cleaner.



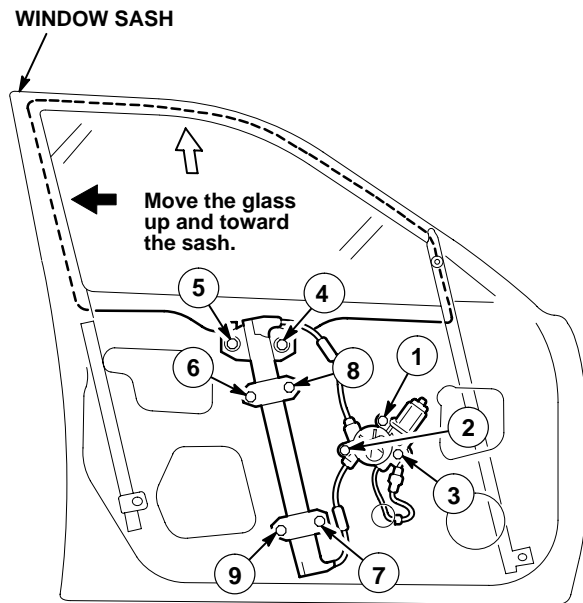
4. Cut a 6 x 400 mm strip of 5T EPT foam, and attach it to the back of the run channel.
5. Reinstall the run channel, then compare it with the one on the opposite door to make sure it is properly seated in the sash.
6. Reinstall the sash trim, then raise the glass all the way.
7. With a trim removal tool, carefully press down on the front edge of the power window switch panel between the switch and the grip cover. This releases the top tab on the cover.



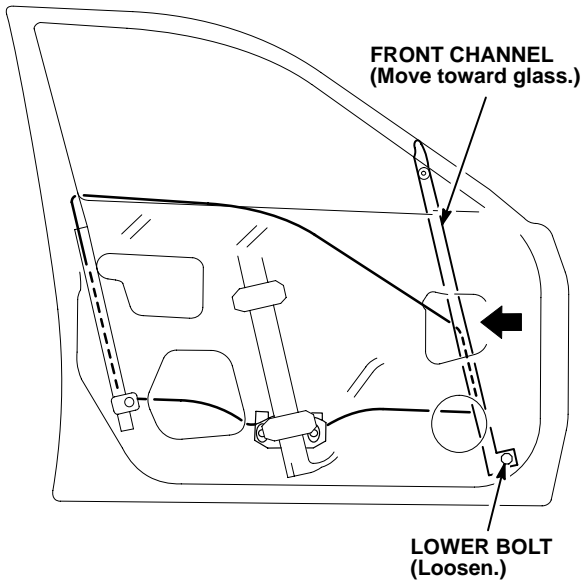
8. While still pressing down on the switch panel, use your free hand to pull the cover away until the clip below the top tab releases from the door grip.



9. Remove the door panel. See the Body section of the appropriate Civic Shop Manual.
10. Remove the plastic rain protector.
11. If installed, remove the power door lock control unit.
12. Loosen the window regulator bolts and the glass mounting bolts. Move the glass up and toward the window sash. Retighten the bolts to 8 N·m (6 lb-ft) in the sequence shown.



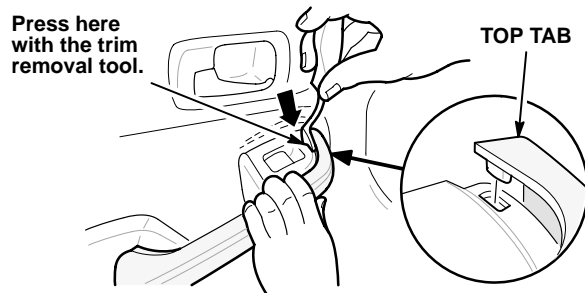
- Lower the glass all the way. Loosen the lower bolt on the front channel, move the channel toward the glass, and retighten the bolt.



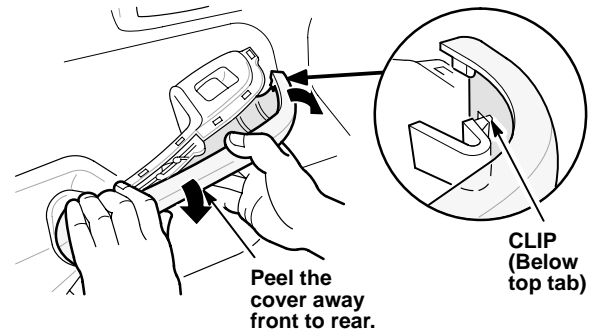
- Make sure the window operates smoothly. If needed, readjust the glass and the front channel.
- Reinstall all removed parts.
- Test-drive the vehicle to confirm the wind noise is gone.

Repairing the Rear Door

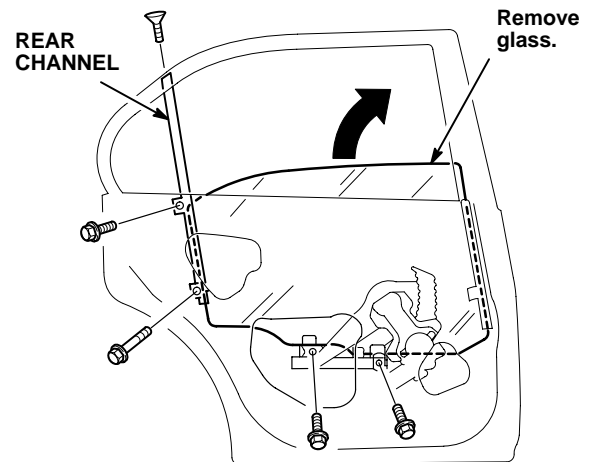
- With a trim removal tool, carefully press down on the front of the power window switch panel, between the switch and the grip cover. This releases the top tab on the cover.



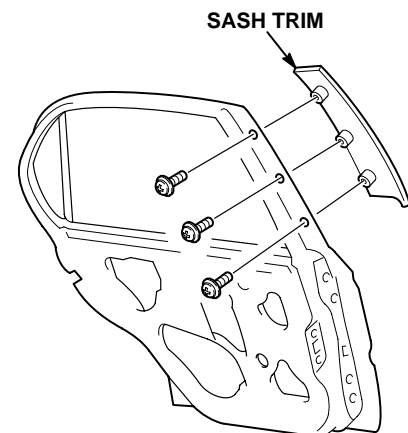
- While still pressing down on the switch panel, use your free hand to pull the cover away until the clip below the top tab releases from the door grip.



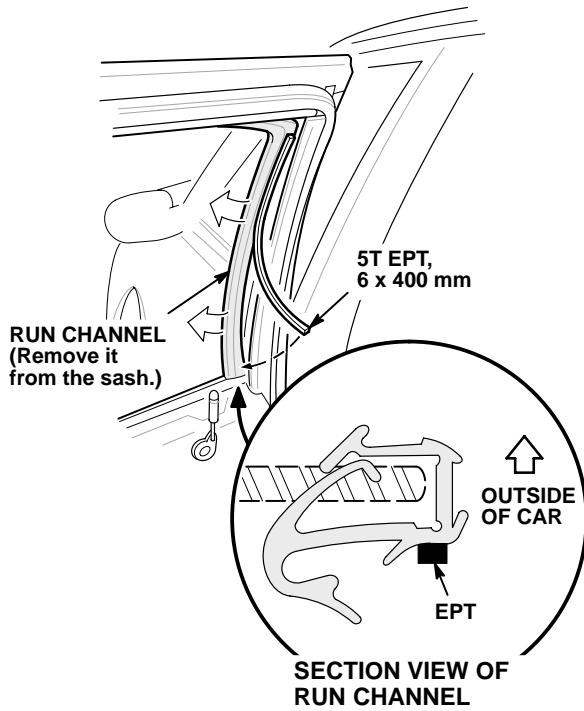
- Remove the door panel. See the Body section of the appropriate Civic Shop Manual.
- Remove the plastic rain protector.
- Lower the glass all the way, then remove it.



- Remove the sash trim.

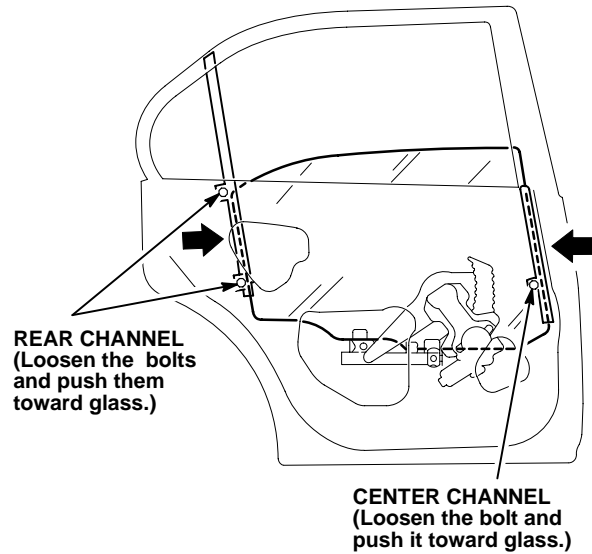


7. Pull the front edge of the glass run channel out of the sash, then clean the run channel with 3M General Purpose Cleaner.



8. Cut a 6 x 400 mm strip of 5T EPT foam, and attach it to the back of the run channel.
9. Reinstall the run channel, then compare it with the one on the opposite door to make sure it is properly seated in the sash.

10. Reinstall the sash trim and the glass.
11. Loosen the bolts on the center channel and the rear channel. Move both channels toward the glass, and retighten the bolts.



12. Make sure the window operates smoothly. If needed, readjust the channels.
13. Reinstall all removed parts.
14. Test-drive the vehicle to confirm the wind noise is gone.