

Model	Applicable To	File Under	Bulletin No.
CIVIC	See VEHICLES AFFECTED	BODY	97-012
			Issue Date APRIL 1997

Ignition Switch Binds

PROBLEM

The ignition key/switch binds or is hard to turn. Occasionally, it does not return all the way to the ON (II) position from START (III).

CORRECTIVE ACTION

Replace the ignition switch.

VEHICLES AFFECTED

1996 Civic	ALL	
1997 Civic		
2 door		
KC	thru VIN	1HGEJ6263VL801505
KE	thru VIN	1HGEJ61700L101502
KG	thru VIN	1HGEJ61300L101262
KH	thru VIN	1HGEJ8232VL037535
KK	thru VIN	1HGEJ8237VL023730
KM	thru VIN	1HGEJ8237VL670001
KP	thru VIN	1HGEJ61700L101922
KQ	thru VIN	1HGEJ81100L101442
KX	thru VIN	1HGEJ8231VL900003
KT	thru VIN	1HGEJ82500L102582
KY	thru VIN	1HGEJ7251VL023010
KZ	thru VIN	1HGEJ61400L101142
4 door		
KK	thru VIN	1HGEJ8543VL009909
KV	thru VIN	1HGEJ5649VL009247
KX	thru VIN	1HGEJ8660VL900031
KM	thru VIN	1HGEJ8656TL670001

WARRANTY CLAIM INFORMATION

In warranty: The normal warranty applies.

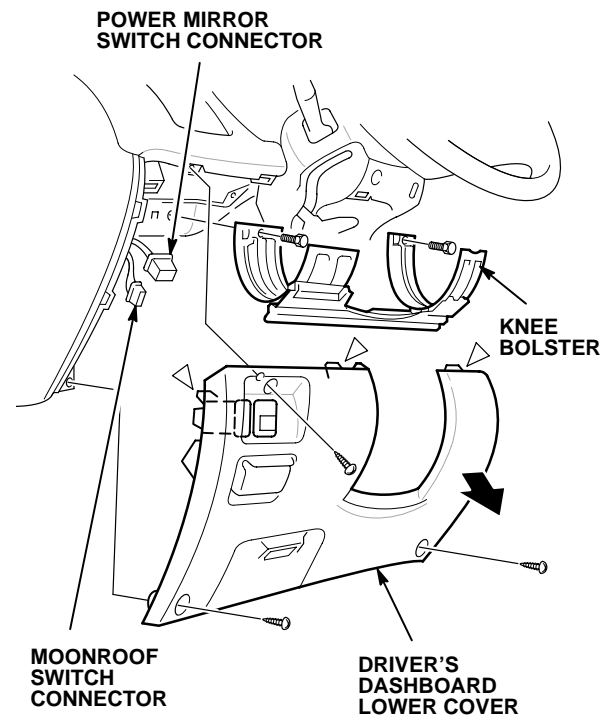
PARTS INFORMATION

Steering lock assembly:

Manual Trans	P/N 35100-S01-A01
Automatic Trans	P/N 35100-S01-A11

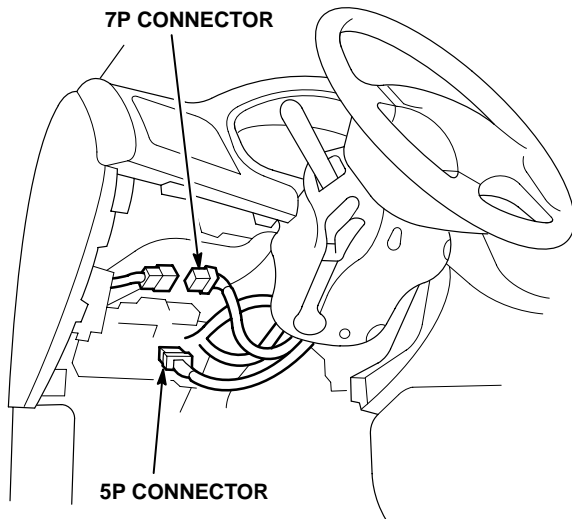
REPAIR PROCEDURE

1. Write down the customer's radio station presets.
2. Disconnect the negative cable from the battery.
3. Remove the dashboard lower cover (three screws and three clips).

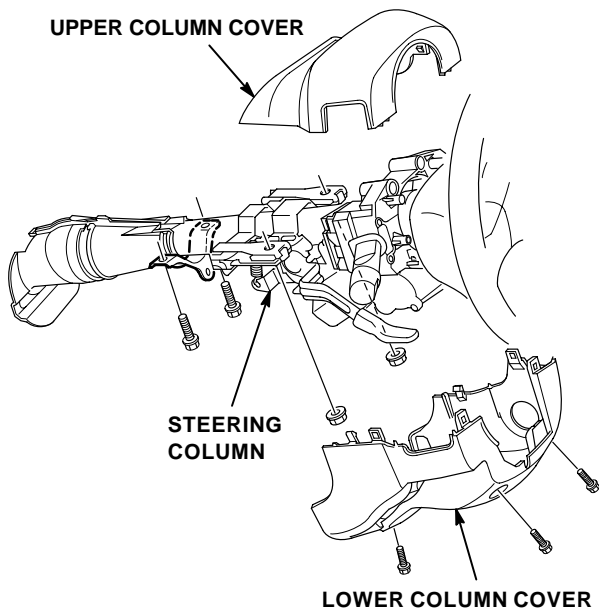


4. (On some models) Disconnect the connectors for the power mirrors and moonroof.
5. Remove the knee bolster (two bolts).

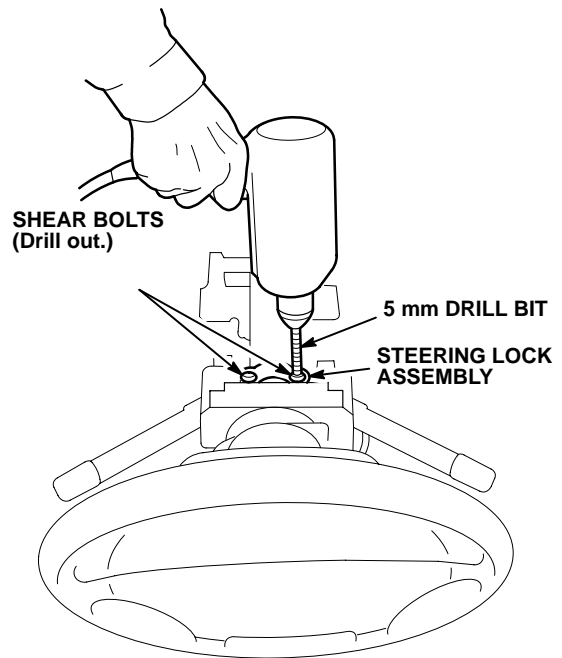
- Disconnect the 5P connector from the under-dash fuse/relay box. Disconnect the 7P connector from the main wire harness.



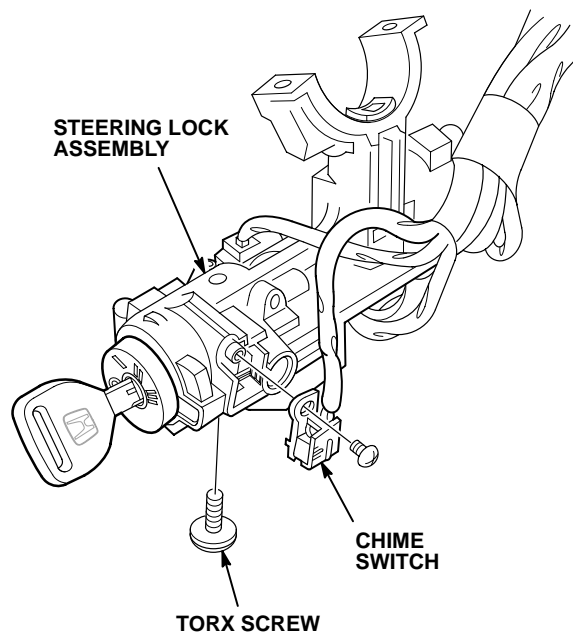
- Remove the upper and lower column covers.
- Remove the nuts and bolts mounting the steering column to the lower dashboard. Carefully lower the steering column assembly.



- Center-punch the two shear bolts mounting the steering lock assembly. Use a 5 mm (3/16 inch) drill bit to drill the heads off the bolts.

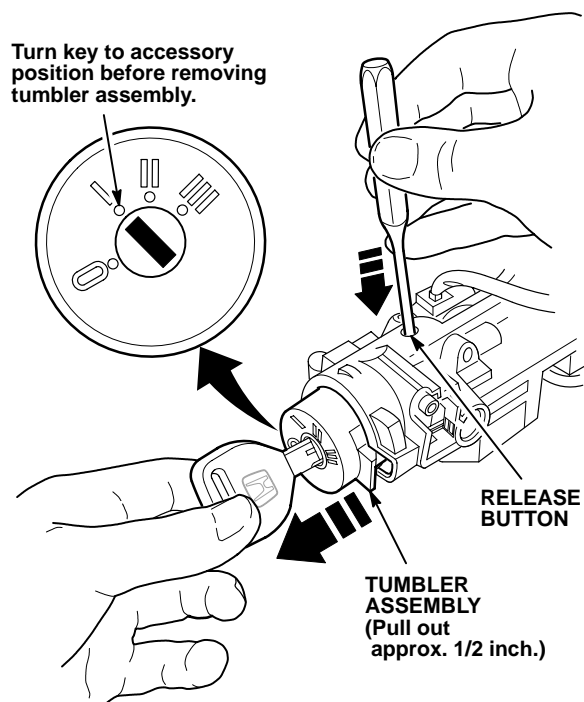


- Remove the bolts and the steering lock assembly from the steering column.
- Remove the chime switch (one screw).

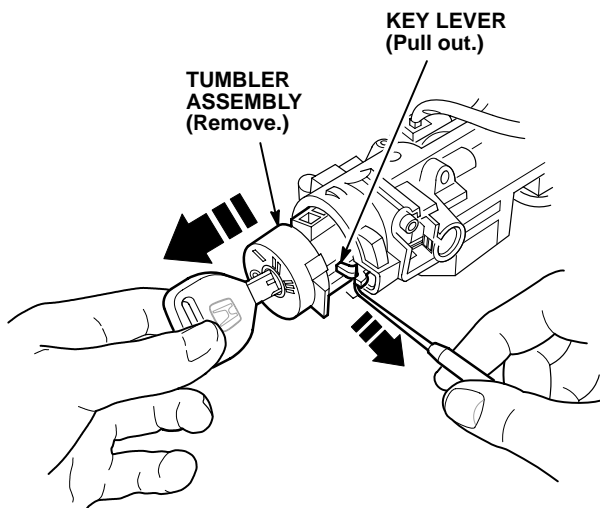


- Remove the Torx screw.
- Insert the key in the ignition switch. Turn the ignition switch to ACCESSORY (I).

14. Push in on the release button with a small pin punch. Pull the tumbler assembly out about 1/2 inch by carefully pulling on the ignition key.



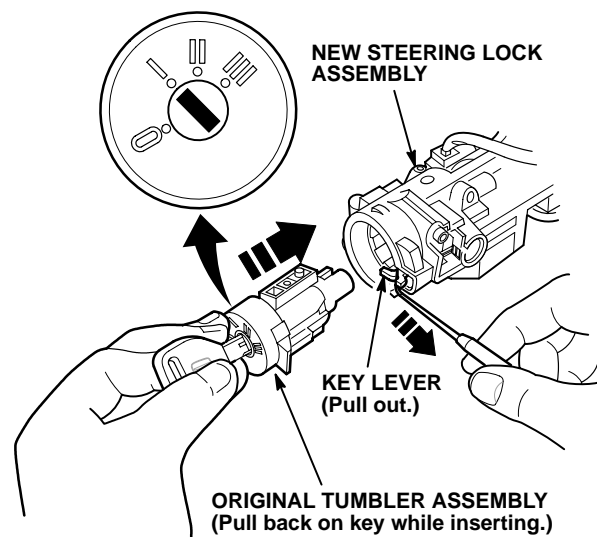
15. Use a 90° hook to pull out on the key lever. Remove the tumbler assembly by pulling on the ignition key.



16. Remove the tumbler assembly from the new steering lock assembly by repeating steps 11 through 15.

NOTE: This will allow you to install the original tumbler assembly in the new steering lock assembly, so there is no need to rekey the lock.

17. Make sure the original tumbler assembly is still in the ACCESSORY (I) position. To keep tension on the internal parts of the ignition switch, pull back on the key slightly as you insert the tumbler assembly into the steering lock assembly.



18. Use the 90° hook to pull out on the key lever. Carefully insert the tumbler assembly into the steering lock assembly until it is against the tool. Remove the hook, then push the tumbler assembly in the rest of the way.

19. Reinstall the Torx screw and the chime switch.

20. Turn the ignition switch to LOCK (0), and remove the key.

21. Install the steering lock assembly on the steering column. Install the shear bolts finger-tight.

22. Insert the key in the ignition switch. Move the key through all the switch positions. Make sure it moves freely and that the steering column lock works.

23. Tighten the shear bolts until they twist off.

24. Reinstall the steering column to the lower dashboard with the original hardware.

25. Reinstall the column covers.

26. Reconnect the 5P and 7P connectors.

27. Reinstall the knee bolster and the dashboard lower cover.

28. Reconnect the connectors for the power mirrors and moonroof, and reinstall the dashboard lower cover.

29. Reconnect the negative cable to the battery.

30. Enter the customer's radio station presets.