



Clicking While Driving in 2nd Gear (Supersedes 03-009, dated September 2003)

SYMPTOM

Clicking is heard when making right turns in 2nd gear.

PROBABLE CAUSE

The reverse idler gear is contacting the 1st/2nd hub sleeve set.

VEHICLES AFFECTED

2001-02 KK, KX: ALL

2003 Civic with M/T

KX *2-Door DX, LX:*

From VIN 1HGEM2...3L900001 thru
1HGEM2...3L901481

4-Door DX, LX:

From VIN 1HGES1...3L900001 thru
1HGES1...3L906277

4-Door EX:

From VIN 1HGES2...3L900001 thru
1HGES2...3L906660

KK *2-Door EX*

From VIN 1HGEM2...3L500001 thru
1HGEM2...3L500025

4-Door DX, LX:

From VIN 1HGES1...3L750001 thru
1HGES1...3L750351

From VIN 2HGES1...3H750001 thru
2HGES1...3H750351

KU Japan Production (VIN begins with JHM): ALL

CORRECTIVE ACTION

Replace the reverse idler gear, the 1st/2nd synchro hub/sleeve set, and the reverse gear holder.

REQUIRED MATERIALS

Honda Manual Transmission Fluid,
1.6 liters (1.7 quarts) required:
P/N 08798-9016

Liquid Gasket: P/N 08718-0001

PARTS INFORMATION

Gear, Reverse Idle:	P/N 23540-PLW-000
Gear Set:	P/N 23432-PLW-315
Holder:	P/N 24230-PLW-010
12 mm Washer:	P/N 94109-12000
14 mm Washer:	P/N 94109-14000
20 mm Washer:	P/N 94109-20000
22 mm Locknut:	P/N 90202-PB6-010

WARRANTY CLAIM INFORMATION

In warranty: The normal warranty applies.

Operation Number: 213110

Flat Rate Time: 4.0 hours

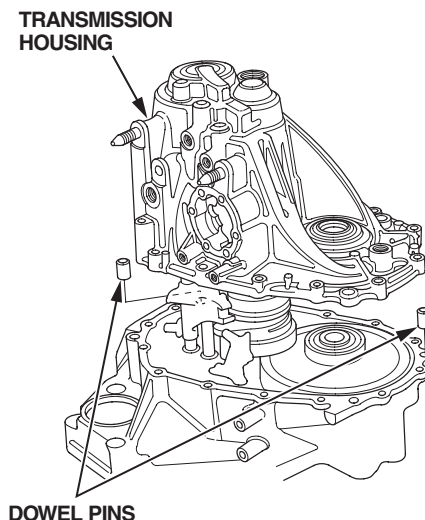
Failed Part: P/N 24230-PLW-000

Defect Code: 00504

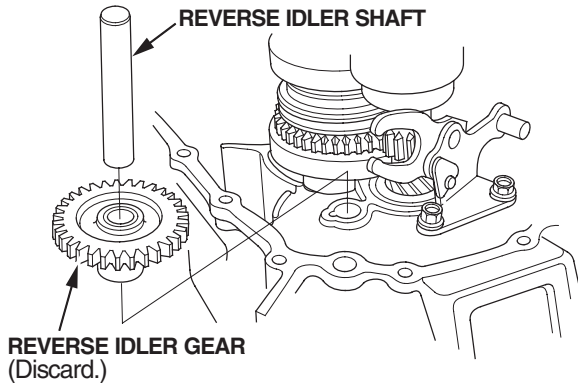
Symptom Code: 04201

REPAIR PROCEDURE

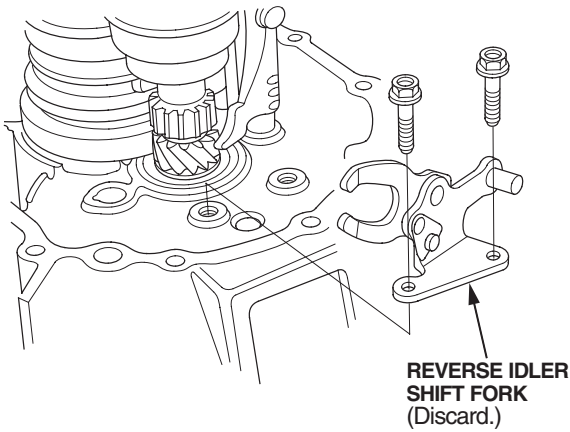
1. Remove the transmission. Then remove the housing. Refer to the transmission section of the 2001-04 Civic Shop Manual.



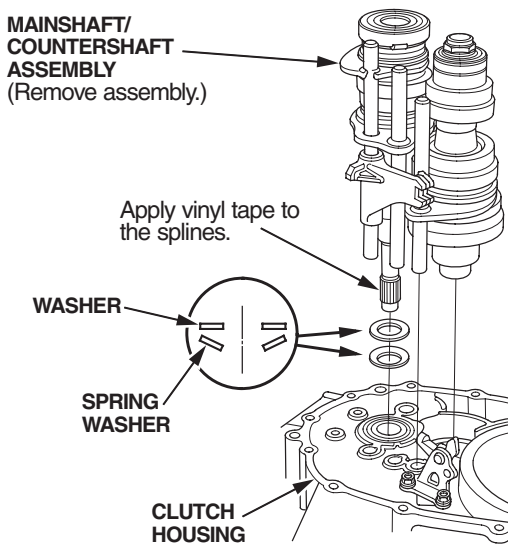
- Remove the reverse idler shaft and the reverse idler gear; discard the gear. Refer to the transmission section of the 2001–04 Civic Shop Manual.



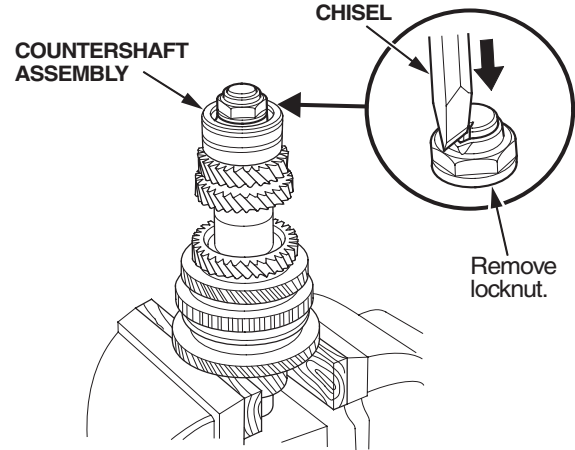
- Remove and discard the shift fork.



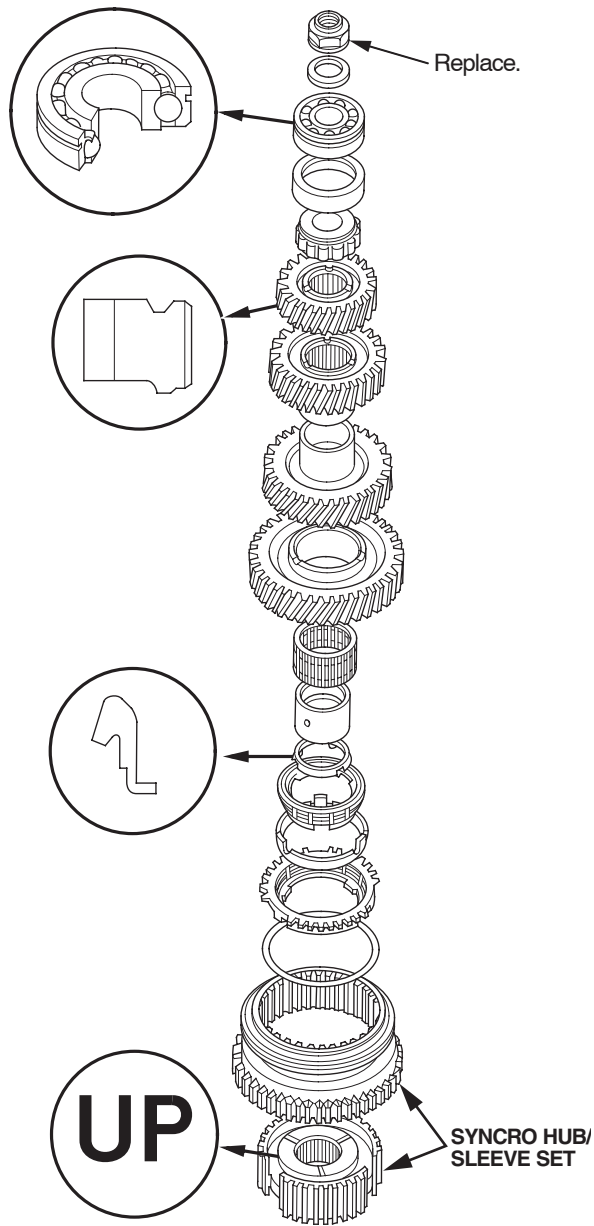
- Apply vinyl tape to the mainshaft splines to protect the seal, then remove the mainshaft and shift forks as an assembly from the clutch housing.



- Disassemble the countershaft assembly; refer to the transmission section of the 2001–04 Civic Shop Manual.

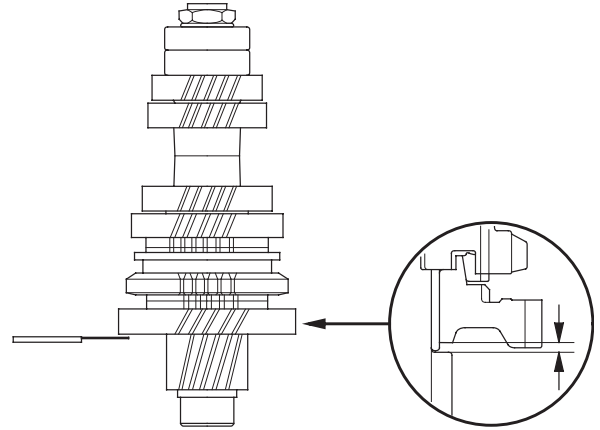


- Replace the 1st/2nd synchro hub/sleeve, and reassemble the countershaft; refer to the transmission section of the 2001–04 Civic Shop Manual.

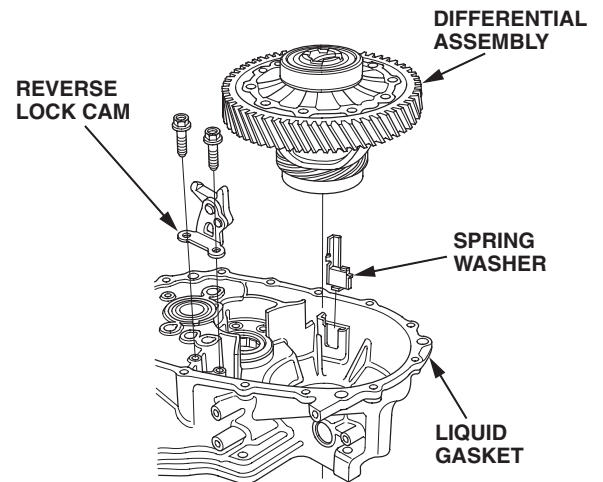


- Check the countershaft clearance; refer to the transmission section of the 2001–04 Civic Shop Manual.

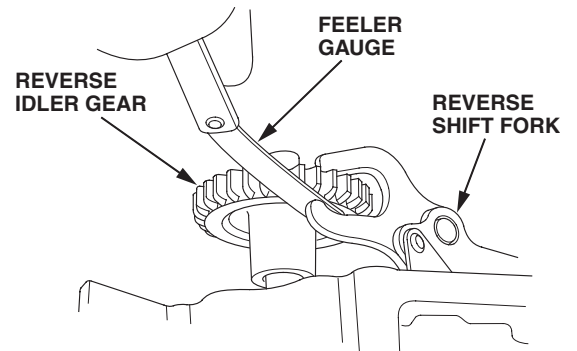
Standard: 0.03–0.12 mm (0.001–0.005 in.)
 Service Limit: 0.22 mm (0.009 in.)



- Reassemble the transmission; refer to the transmission section of the 2001–04 Civic Shop Manual.



- Install the new shift fork holder. Check the reverse shift fork clearance; refer to the transmission section of the 2001–04 Civic Shop Manual.



10. Reinstall the transmission; refer to the 2001–04 Civic Shop Manual.
11. Fill the transmission with MTF.
12. Test-drive the car; make several right turns in 2nd gear, and check that the clicking is gone.